

Fire Safety in Assisted Living Facilities

Lew Wallace
334-206-5184
www.adph.org/facmgmt

The screenshot shows the Alabama Department of Public Health (ADPH) website. The main heading is 'Facilities Management and Technical Services'. Below this, it states: 'The mission of the Office of Facilities Management and the Technical Services Unit is to assure safe and suitable conditions in the built environment for equipment employees and occupants of licensed health care facilities throughout Alabama.' It also mentions 'County Health Department Physical Plant and Equipment Standards (Rev. 01/12/99)'. There are two small images: one of a building and one of a person in a hard hat.

The image shows two book covers side-by-side. The left cover is 'NFPA 101 Life Safety Code' 2000 Edition, featuring a stylized illustration of buildings and a fire hydrant. The right cover is 'Life Safety Code HANDBOOK', also featuring a similar illustration. Both covers have the NFPA logo.

2000 *Life Safety Code*



1-800-344-3555

www.nfpa.org
www.nfpacatalog.org

ALF Fire Safety

Leading issues in ALF surveys:

1. Exit Access Doors, Bedroom and Exit door locks.
2. Fire Alarm System
3. Sprinkler System
4. Fire Drills
5. Emergency Lighting and Exit Lights
6. Oxygen Storage
7. Extension Cords

Exit Access Doors



1. Doors shall not be locked against exiting, except in SCALFs.
2. An exit door should be operable with minimum force.
3. An exit door shall swing to the exterior per Rules.
4. Exit doors shall be operable with not more than one releasing operation (single action). A SCALF is permitted to have special locking arrangements.

Bedroom Door Locks

Permitted when

- **Unlocking from inside room is with a thumb turn,**
- **Residents understand how to unlock the doors and**
- **Staff has quick access to a master key (or bedroom doors keyed alike).**

Exit Door Locking Arrangements in SCALFs



1. Submit for plan review and inspection, NO fee.
2. Two arrangements per Rules, Delayed Egress or Electrically Locked.
3. Staff capable of rapid opening of locked doors.
4. Locks release automatically upon fire alarm signal or sprinkler water flow.
5. Emergency release switches at staff stations and locked egress doors (SCALF).
6. Must release automatically upon loss of power to the locks and fire alarm control panel.

Fire Alarm System

1. Fire alarm company inspection & testing semiannually for compliance with NFPA 72 (ADPH rule). Paperwork must be maintained on the premises.
2. Facility shall provide for testing and maintenance.
3. Automatic on and off-site notification required of an alarm.
4. Shall be used to initiate fire drills.
5. Must release door hold-open devices and maglocks (SCALFS).
6. System smoke detection required in the corridors.
7. Shall provide supervision of the sprinkler system.
8. Outages more than 4 hrs. require a fire watch.

ARTICLE ON WEB PAGE

Sprinkler System

Required in Alabama assisted living facilities by Rule as "Impractical to Evacuate."

1. Sprinkler company inspection and testing semiannually (ADPH Rule) for compliance with NFPA 13 (Cong) or 13D or 13R (Grp). Paperwork must be maintained on the premises.
2. Facility sprinkled throughout.
3. Control valves shall be supervised locally by the fire alarm system.
4. A water flow alarm shall transmit a signal automatically off site via the fire alarm system.
5. Outages more than 4 hrs. require a fire watch.

Fire Drills

1. Written Plan available to all staff (*Life Safety Code*).
2. Document each fire drill and fire incident.
3. At least 1 per month.
4. At least 1 per quarter per shift.
5. Initiate with fire alarm system, except 9 pm to 6 am. Document testing the fire alarm system.
6. Verify smoke doors close & SCALF locks release.
7. Close all room corridor doors.
8. Evacuate residents to adjacent smoke compartments or outdoors (except 9 pm to 6 am).
9. Keep exit paths clear.

Written Safety Plan

Required – 2000 LSC 18.7.2.2 and 19.7.2.2

1. Use of alarms.
2. Transmission of alarm to fire department.
3. Emergency phone call to fire department (2003).
4. Response to alarms.
5. Isolation of fire.
6. Evacuation of immediate area.
7. Evacuation of smoke compartment.
8. Preparation of floors and building for evacuation.
9. Extinguishment of fire.

RACE Strategy

Life Safety Code, "Procedure in Case of Fire"

R – RESCUE

"**Removal** of all occupants directly involved with the fire"

A – ALARM

"Transmission of appropriate fire **alarm** signal"

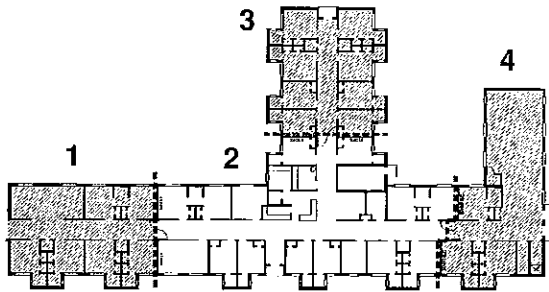
C – CONTAIN

"**Confinement** . . . by closing doors to isolate the fire area"

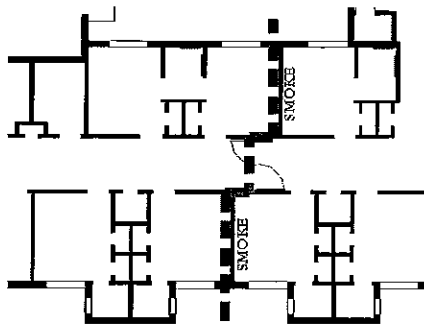
E – EVACUATE or EXTINGUISH

"**Relocation** of patients as detailed in safety plan"

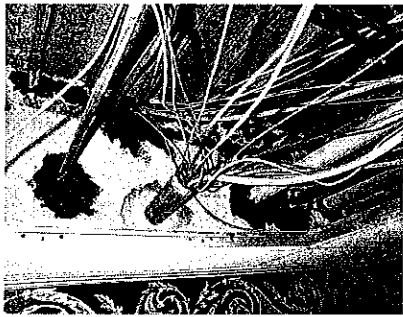
Smoke Compartments



Smoke Barriers



Smoke Barriers



Pipe sleeve with firestop compound or intumescent putty

Emergency Lighting & Exit Signs

1. In exit access corridors and other areas.
2. Come on within 10 seconds of power failure.
3. Operate for a minimum 1.5 hours.
4. Tested monthly for not less than 30 sec. Best method for testing is to turn the breaker off supplying power to the lights and exit signs to test the unit battery.

Oxygen Storage

1. NFPA 99 covers oxygen storage req'ts.
2. Visit Facility Management/Technical Services web page at www.adph.org/facmgmt for an article on this subject.

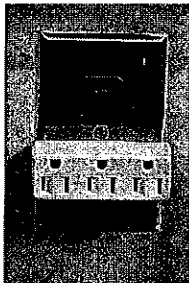
Extension Cords

Can overload the building electrical system and possibly cause a fire.

Requirements of NEC –

- For temporary use only.
- For light electrical loads.
- Must be plugged directly into a wall receptacle, not into another cord.
- Visit www.adph.org/facmgmt for an article on this subject.

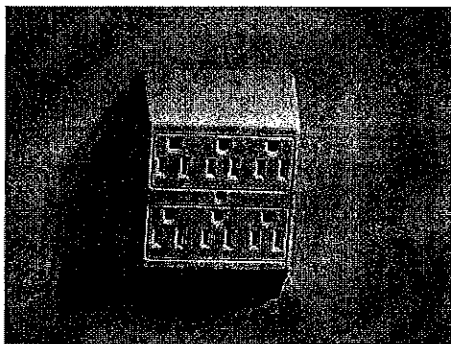
3 to 1 Adapter – Not Permitted



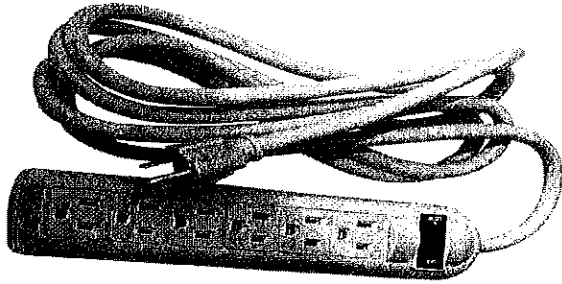
Receptacle adapters are not permitted.

Overloads circuit without offering circuit breaker protection

6 to 2 Adapter – Not Permitted



Breaker-Type Power Strip



Surge protection is not the issue.

Facility Closure

Rules states that closure of a facility for 30 days or longer shall cause its license to automatically lapse. Before it can be reopened, a new license application must be submitted, then go through a plan review and inspection process, upgrade to the latest adopted building and fire codes to receive a Certificate of Completion. A plan review fee will be charged.
